

**RF Coaxial Adapter, 2.40 mm (M) to 2.40 mm (M)**  
**P/N: MLA-240MST-240MST**

**Package Contents**

Connector	1 Pc
Protection Cap	2 Pcs

**Adapter Configuration**

End 1	2.40 mm Male
End 2	2.40 mm Male

**Materials**

Description	Material	Finish
Center Pin	Beryllium Copper	Gold-Plated
Shell	Stainless Steel	Passivated

**Electrical Specifications**

Impedance	50 Ohms
Frequency Range	DC to 50 GHz
V.S.W.R.	1.15 max. at 50 GHz
Insertion Loss	≤0.42 dB max. at 50 GHz

**Mechanical Specifications**

Durability	≥ 1000 Cycles
------------	---------------

**Environmental Specifications**

Operating Temperature Range	-65 to +165 °C
-----------------------------	----------------



**Features:**

- Designed for Repeatability and Accuracy
- Wide Variety of Mating Interfaces
- Customizable

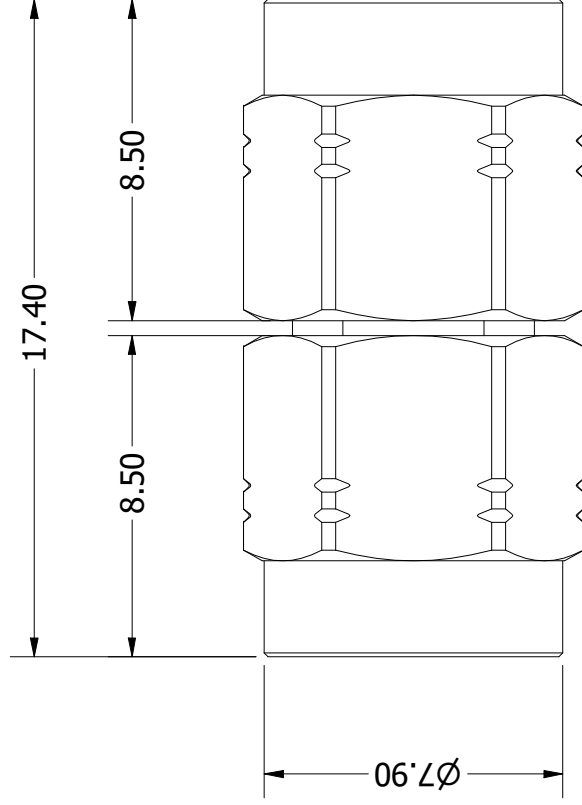
**Applications:**

- High Speed IO Test Setup: Instrumentation Connection to DUT Eval Boards
- Precision Connector Savers
- Adapts Two Different Precision Interfaces



# CAD Drawing

MLA-240MST-240MST



**Title:**

RF Coaxial Adapter, 2.40 mm (M) to  
2.40 mm (M)

**Notes:**

1. All dimensions are in millimetres unless otherwise specified.
2. These characteristics are typical and for reference.

**multiLane** 

[www.multilaneinc.com](http://www.multilaneinc.com)

[sales@multilaneinc.com](mailto:sales@multilaneinc.com)

**Rev:** A

**Scale:** 5:1